



2023 PRODUCT BROCHURE



INVENTOR PROGRAM

Under the SUPCO TradeFox® Inventor Program, we work with technicians to bring their ideas to life and to the market through our years of experience in **engineering, manufacturing, marketing and national and global distribution.**

Visit SUPCOTRADEFOX.COM to learn more.

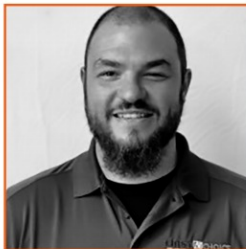
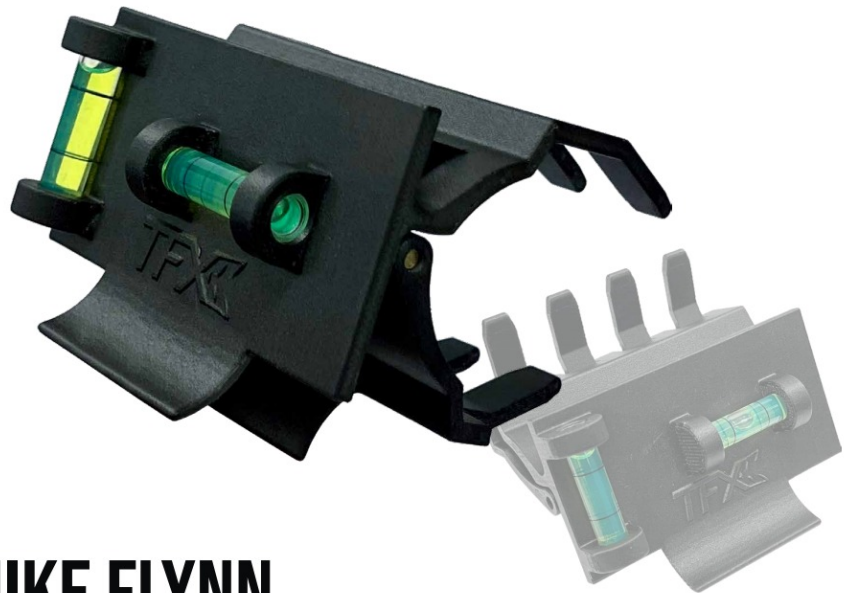
COMING SOON

TFXUPL

UNIVERSAL PIPE LEVEL

This technician-invented clamp level takes the headache out of balancing levels on copper pipe or PVC. Just clamp it on and level up your HVAC and Plumbing game.

- Accurate & easy to level copper and PVC pipe sizes from 3/8" to 2"
- Clamp firmly attaches to the various pipe sizes for hands-free leveling
- Made from Durable ABS plastic that won't wear out quickly or become loose like typical pipe levels
- Easily clamps to your bag for quick access
- Use it everywhere. Clamp it or free set it to level duct work, thermostats, air handlers, furnaces, drain pans, drain line pitch and so much more.



MIKE FLYNN

SUPCO TRADEFOX®

With an impressive Instagram following, HVAC technician **Mike Flynn (@flynnstone1)** is known for meticulously checking boiler pipe levels. Push-on levels were always a challenge for him because the plastic gave way easily. It was also difficult and time-consuming to hold a drill and a level to the pipe, so he resorted to zip ties. Seeking a better way, Mike invented the clamp-on Universal Pipe Level as a versatile, hands-free option to save time and effort.

NEW

MTEMP

MAGNATEMP TELESCOPIC TEMPERATURE PROBE

The Magnatemp telescopic temperature probe allows you to accurately check air temperature in most situations inside the ceiling duct. Its patented design eliminates the need to pull out a ladder or struggle with inaccurate laser gun measurements.

- Extends from 10.5" to 36"
- Magnet and hook for hands-free convenience
- Easy to read digital face
- 5.5" flexible probe with protective cover
- Measures in °F or °C
- Temperature Range: -58°F to 572°F (-50°C to 300°C)
- Tolerance: ±2°F (±1°C)
- Uses one LR44 battery (included)



Magnetic Tip



RAY VALDEZ

SUPCO TRADEFOX®

HVAC technician Ray Valdez would often open a return filter grill to find the filter had been sucked up past the flanges. This was problematic because the air restriction could affect the efficiency of the A/C system, and cause other system issues. To fix the issue, he would have to struggle to run two pieces of metal plumbers tape across the area and screw the two ends to make a brace. This took a lot of trial and error and often looked bad. When one of his customers told him he got cut by the straps when changing the filter, Ray was determined to create a product that solved the problem. He invented the magnetic extendable filter braces to be quick, easy and safe.

Ray Valdez is also the inventor of the Magnetic Compressor Cooler and Magnatemp Telescopic Temperature Probe.

CPPRO

COOLPRESSOR

High-Powered Magnetic Compressor Cooler

- Uses high powered magnet
- Hands free
- Saves time
- Creates a powerful cascade of water
- No messy backsplash
- Attaches to garden hose



TFXEFB

EXTENDABLE FILTER BRACES

Holds filters in place to prevent them from being sucked into the return

- Extends from 16" - 31"
- Magnetic ends to hold in place
- Can use multiple braces for added support
- Sold in packs of 6



800.333.9125 | ORDERS@SUPCO.COM

ELIMINATE COMPRESSOR SHORT CYCLING AND START THE SYSTEM SAFELY - *WHEN YOU'RE READY TO START IT.*

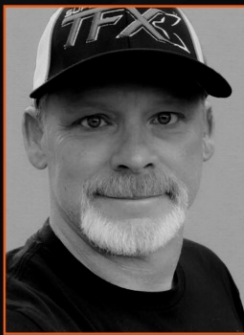
TFXJK

JUMPER KING™ MULTI-JUMPER W/ SELECTOR

This patented all-in-one kit allows you to quickly bypass any low voltage thermostat regardless of style.



- Innovative circuit selector switches to activate leads/circuits of your choosing
- Resettable popper fuse - will never short out
- Includes 20 interchangeable tips - alligator clamps, magnetic tips, self-piercing insulation tips and spade adapters



ROBERT KRAFT

SUPCO TRADEFOX®

HVAC technician Robert Kraft wanted a safer way to start a unit, other than standard jumper wires, to minimize the risk of damaging a compressor. After many prototypes, he designed a versatile tool that can start the unit, bypass switches, and diagnose low voltage shorts with a 3 Amp pop-out fuse, and named it- rightly so, The Jumper King™.

NEW TFXNPB NITROGEN PURGE BOOT

The Nitrogen Purge Boot was designed to assist the technician in the purging and brazing process. O-rings fit and seal over various sizes of ACR tubing creating a "hands-free" and hassle-free solution between your nitrogen regulator and the refrigerant line.

- Works on 3/8", 1/2", 5/8", 3/4", 7/8", and 1 1/8" OD ACR
- O-Rings are compatible with all refrigerant oils and flushing agents



CHRIS HUGHES

SUPCO TRADEFOX®

The Nitrogen Purge Boot was invented by HVAC technician Chris Hughes after a challenging job scenario forced him and his crew to come up with makeshift solutions to push nitrogen through a large copper line set.

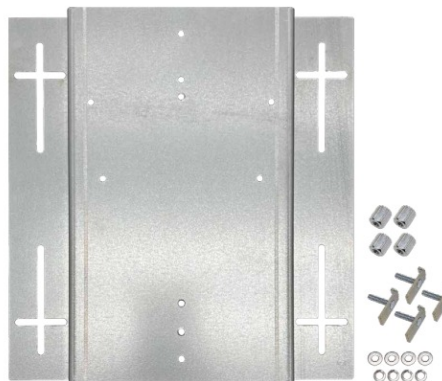
He walked away from the job with the idea for a hands-free tool that could easily pop on and pop off of line sets of various sizes with a flared end for hoses.



NEW TFXDMP DISCONNECT MOUNTING PLATE

A universal way to secure the disconnect to the unit, without blocking access to the electrical panel.

- Designed to fit the various layouts of all single phase disconnect boxes using 1/2" length screws
- Cross pattern mounting design allows for universal installation on any caged or stamped condensing or packaged unit
- Uses hex nuts for easy installation with 5/16" nut driver
- Eliminates potential damage to the unit during installation
- Made of weather-resistant galvanized metal



JUSTIN PETRY

SUPCO TRADEFOX®

The Disconnect Mounting Plate was invented by HVAC technician Justin Petry. Justin was inspired during a rooftop installation when he struggled to open the access panel because the disconnect was mounted directly to the door of a split system condenser. He came up with the idea of the mounting plate as a way to firmly and securely mount the disconnect when there is no other suitable mounting structure.

He also created it to help avoid some of the risky problems that can come from makeshift mounting fabrications which may damage a coil or block access to electrical panels.



800.333.9125 | ORDERS@SUPCO.COM

NEW

TFXKP

KNEELING PAD

TradeFox® and Solderweld® have teamed up to offer technicians a high-density, compact kneeling pad designed for optimal comfort so you can focus on the job.

- High-Density EVA foam Construction
- Excellent shock absorption and cushioning
- Compact size and handle for easy carrying and storage
- Dual-sided branding



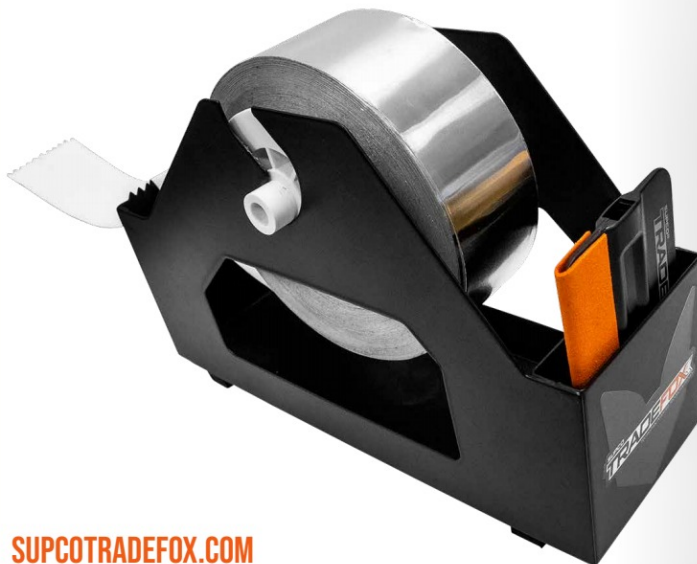
NEW

TFXKP

UNIVERSAL TAPE DISPENSER

Keep your tape clean and within reach on the job site with this convenient magnetic tape holder.

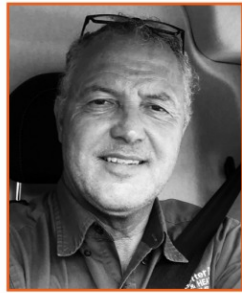
- Use with all types of tape up to 3" width
- Magnetic bottom holds securely to metal surfaces for one hand use
- Serrated cutting edge
- Handy squeegee storage



JVI

JONES VALVE® CONDENSATE CLEANOUT

- Most compact size on the market
- No cutting or repairing drain line
- Single Schrader allows for one hose hook-up
- 1/4" hose connection, 3/4" condensate line



ANDY JONES

SUPCO TRADEFOX®

The Jones Valve® was invented by Andy Jones, an HVAC technician who was looking for a way to permanently mount a multi-directional cleanout device on a condensate line so cleanouts would be faster and easier on service and maintenance calls.

Andy wanted something compact and fast. The theory of being able to service drain lines without having to cut the line influence the International Code Council to change the International Mechanical Code 307.2.5 in 2015 to state "Condensate drain lines shall be configured to permit the clearing of blockages and performance of maintenance without requiring the drain line to be cut".



JOSH COOLEY

SUPCO TRADEFOX® AND PRODUCT DEVELOPMENT MANAGER

owner Josh understands technicians and the trade. He is also the inventor behind the SUPCO TradeFox® Magnetic Umbrella that so many Techs in our industry know and love. He has since invented the Fire Rated Magnetic Umbrella and accessories which allows other trades, such as line workers, the versatility to benefit from the patented adjustable umbrella system.

MUKIT

ADJUSTABLE MAGNETIC UMBRELLA KIT

- 60" wide
- Waterproof, UV-coated umbrella w/ durable and flexible fiberglass ribs
- Patented base swivels and locks
- Heavy-duty magnet attaches securely to any metal housing
- Includes NEW SUPCO TRADEFOX® Lanyard to secure the umbrella



800.333.9125 | ORDERS@SUPCO.COM

BRING MORE FLEXIBILITY TO YOUR SUPCO TRADEFOX® MAGNETIC UMBRELLA WITH THESE **ADD-ON ACCESSORIES.**



EXTENSION POLE FOR MAGNETIC UMBRELLA

MUPOLE

- Adds 9" in height to umbrella (total height approx. 46")
- Easy installation - no tools required
- Attaches between umbrella and base
- Designed to use with MUKIT
- Intended to be used with MUKIT only when the umbrella is in vertical position



SECURE CLAMP FOR MAGNETIC UMBRELLA

MUCLAMP

- Replaces magnetic base so umbrella can clamp to a variety of non-magnetic surfaces for more working flexibility
- Made from heavy-duty steel

NOW, EVEN MORE TRADE WORKERS CAN BENEFIT FROM THE VERSATILITY OF OUR **ADJUSTABLE UMBRELLA SYSTEM.**



FIRE-RATED ADJUSTABLE MAGNETIC UMBRELLA KIT

MUKIT-FR

Designed with NFPA 701 fire-rated fabric for a wide variety of applications.

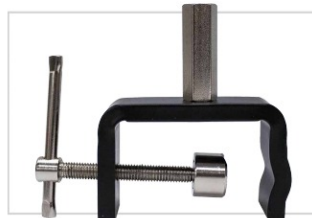
KIT INCLUDES:



- 60" wide umbrella with NFPA 701 fire-rated fabric, fiberglass shaft and plastic ribs



- Patented, adjustable base swivels and locks
- Heavy-duty magnet to attach to any ferrous metal surface
- Lanyard to help secure umbrella



- Heavy-duty steel clamp

FP18, FP48 FILTER PULLERS



- Makes getting hard to reach filters easy
- FP18: 18" extension
- FP48: 48" extension

MAGNETIC TEST LEADS



- Ideal for low voltage, 30V
- Powerful magnets
- 20" wire length

SUPCO® P/N	DESCRIPTION
MAG1YL	Yellow Leads
MAG1BL	Blue Leads
MAG1BK	Black Leads
MAG1GR	Green Leads
MAG1RD	Red Leads

BRKPRO FUSE TESTING SUPER KIT

- (1) Standard Blade to 1/4" Fuse Adapter
- (1) Standard Blade to 5mm Fuse Adapter
- (1) Standard Blade to 4.5mm Fuse Adapter
- (1) Supco® Fuse Pro 3 AMP Tester with Light
- (1) Supco® Fuse Pro 5 AMP Tester with Light
- Auxiliary Wire Harness



FSC10 FLAME SENSOR CLEANER



- Easily cleans sensor
- Prevents false starts
- Convenient key ring



FPRO100 FURNACE PRO (6 PACK)

- Holds in door switch for troubleshooting furnaces, air handlers, etc.
- Hands-free



STEVE FISCHER

SUPCO TRADEFOX®

The MagJumper™ was invented by Steve Fischer, a real HVAC technician who wanted to find a way to keep alligator clips from popping off thermostat subbases. He taped magnets to alligator clips and his concept was born. Steve also invented the BRK3 and BRK5 Fuse PROs because he was wasting job time making trips to the gas station for fuses. He came up with the Fuse PRO to take the place of the fuse during low voltage circuit testing until the short is identified.

And, the extendable filter pullers? "I was tired of my clothes getting dirty reaching for filters." Steve said. "Plus, with the magnetic tip, it doubles as a magnetic reach tool." SUPCO manufactures Steve's filter pullers in 18" (FP18) and 48" (FP48) versions.

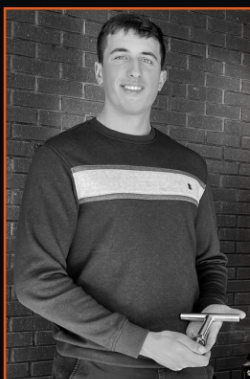
800.333.9125 | ORDERS@SUPCO.COM

STEEL "T" SHAPED HANDLES AND STRAP MAKE CARRYING OLD WATER HEATERS EASIER, *ESPECIALLY IN TIGHT SPACES.*

TFXWHH

WATER HEATER HANDLES

- Steel "T" shaped handles with 1" female steel threaded end
- Screws onto the inlet and outlet of water heater for secure gripping and carrying
- Includes 1" to 3/4" steel reducer
- Carrying strap acts as a bottom sling for an easier two person lift, especially on stairs



SAL MURGOLO

SUPCO TRADEFOX®

While struggling to remove a water heater in a tight stairwell, HVAC technician Sal Murgolo came up with the idea of the water heater handles. Since the top of water heaters offer no effective area to hold onto, he developed easy grip handles to attach to the inlet and outlet areas of the unit. His goal was to make the removal of old water heaters easier for plumbers and technicians, especially in tight spaces.

RLC100

REFRIGERANT LINE CLEANING KIT

Contains everything you need to remove oil from residential and commercial refrigerant lines without messy flushing.

30 Foam Line Cleaners:

- (5) 1 3/8" (5) 3/4"
- (5) 1 1/8" (5) 5/8"
- (5) 7/8" (5) 1/2"

3 Launchers:

- (1) 1 3/8"
- (1) 7/8"
- (1) 5/8"

4 Adapters:

- (1) 1 3/8" - 1 1/8"
- (1) 7/8" - 3/4"
- (1) 5/8" - 1/2"
- (1) 5/8" - 3/8"



INCLUDES CONVENIENT CARRYING CASE!

(1) Catch Net

REFRIGERANT SAFETY LOCKING CAPS

- No special tools required; uses a standard 3/16" hex key for removal
- Resists fat, grease, oils & solvents
- Compatible with R717, R12, R22, R134a, R404A, R410A and other refrigerants
- Code compliant for tamper resistance
- UV resistant thermoplastic
- Patented cam action cap that easily tightens by hand



Supco® Part No.	Description	
SFL1402	2 Pack	1/4"
SFL1410	10 Pack	1/4"
SFL1450	50 Pack	1/4"
SFL51602	2 Pack	5/16"
SFL51610	10 Pack	5/16"
SFL51650	50 Pack	5/16"



MATTHEW GROSS

SUPCO TRADEFOX®

The plastic Safety Locking Caps were invented by Matthew Gross, an HVAC technician who was looking for a more cost efficient way to comply with tamper resistance codes, and make them easier for service techs to install, remove and carry. "The colorful and expensive locking caps I used seemed to draw more attention than less, and I heard several comments from my customers about their high cost. It got me thinking there has to be another way."

TFXCT

POCKET CONTINUITY TESTER

- Visual light indicator
- Alarm indicator
- Alligator clips for handsfree use
- Magnet on case sticks to metal surfaces
- Shorter lead length eliminates tangling
- Uses one AAA battery



CCB100

COIL CLEANING BRUSH

- Adjustable brush head pivots up to 120°
- Patented stiffness adjustment slide
- Two tempered stainless steel cleaning heads built into a single unit
- Handles extends to 4 ft.



800.333.9125 | ORDERS@SUPCO.COM

ECMPRO**UNIVERSAL ECM TESTER**

- 24" wire length
- Short circuit protection
- 24 VAC operating voltage & indicating light
- Convenient magnet on back of unit
- No batteries required

**SUPCO TRADEFOX®: BRINGING TECHNICIANS' IDEAS TO LIFE**

The ECMPRO was invented by an HVAC technician who was looking for a simple way to check if an Electronically Commutated Motor was good or bad in order to make a quicker diagnosis for the necessary repair.

ATP1**ATTIC PRO® UTILITY LIFT**

- Adjustable beam distance from 14" to 24"
- 20 ft. cable
- Lifts up to 250 lbs.

**STEVE SNYDER**

SUPCO TRADEFOX®

The Attic PRO® was invented by Steve Snyder, a real HVAC technician who was also a fireman. As a one-man operation, he was looking for a way to help lift furnaces and air handlers up into attics. One day on a training exercise, he used a winch to pull a person out of a man-hole - and the Attic PRO idea was born.

INCLUDES CARRYING CASE & STRAPS!



A *Supco* BRAND



@sealedunitpartsco | @supco_hvac | supco.com
P: 800.333.9125 | E: orders@supco.com | F: 800.458.2818

Copyright © 2022 Sealed Unit Parts Co., Inc. All rights reserved.

