



2023

PRODUCT CATALOG

VENTILATION ACCESSORIES

ABOUT US



Lambro Industries provides ventilation accessories for residential and commercial Industries. Headquartered in Amityville, New York, Lambro today builds on it's legacy to provide quality products, excellent customer service and fast shipment turnaround times from when the PO is placed.

The product line consists of flexible ducts (foil flex, semi-rigid, vinyl), wall, roof, soffit (aluminum, galvanized and plastic) exhaust vents along with fresh air intakes, rigid ductwork, pipe and elbows (aluminum, galvanized), complete venting kits, accessories and washer overflow trays.

Lambro services the retail chains, distributors, and wholesale markets.



Edwin L. Berger

The company was founded in 1967 by Mr. Edwin L. Berger, in partnership with his brother Stanley, as a distributor selling to HVAC, Electrical Wholesalers and Lumber Yard Industries. In the mid-1970's, Lambro expanded its operations into the manufacture and assembly of metal and plastic products. Mr. Berger assumed total ownership of Lambro Industries in 1986.

In Memory of the Founders of Lambro Industries, Inc. - Edwin & Stanley Berger

2023 Product Line Overview



New for 2023 is a complete redesign of retail packaging to speed up the buying process. Lambro carries different types of retail packaging to present the products to easily identify on the shelf.

Lambro carries preconfigured plan-o-grams in 2', 4', 6' and 8' sections that have core products for the category. If you would like a custom designed program, we can do that too.



RETAIL PRODUCT PACKAGING

The new retail packaging helps the customer identify products by allowing the product to be clearly identified. New packaging is available in the following configurations: removable product label, polybags, individual boxes and cut case displays.

The packaging calls out the application and product type and lists the core features.

Packaging is available in 3 languages: English, French & Spanish



CAPABILITIES & INNOVATION

Lambro has excess capacity to take on today's demand by supplying our country with exceptional service and timely deliveries. Our mission is to be our customers' warehouse for inventory needed to supply their customers daily.

Lambro has put much effort into research and development and continues to bring ventilation solutions to the industry. For 2023, we have introduced a full line of redesigned injection molded products.

Lambro has the capability to privately label our products supplied to our customers.

Please feel free to reach out to our team with any questions you may have.

TABLE OF CONTENTS



New Products
NEW FOR 2023
Page 4



Flexible Ducts
FOIL FLEX
Page 5



Flexible Ducts
SEMI-RIGID
Page 6



Roof Exhaust Vents
ALUMINUM
Page 7



Roof Exhaust Vents
PLASTIC
Page 8



Wall Exhaust & Intake Vents
ALUMINUM
Pages 9-10



Wall Exhaust & Intake Vents
GALVANIZED
Page 11



Fresh Air Intake Vents
PLASTIC
Pages 12



Wall Exhaust Vents
PLASTIC
Pages 13-14



Soffit Exhaust Vents
PLASTIC
Page 15



Vent Kits
BATH FAN
Pages 16



Vent Kits
CLOTHES DRYER
Pages 17-18



Accessories
BATH FAN & CLOTHES DRYERS
Page 19



Accessories
CLAMPS, CONNECTORS, ETC.
Page 20



Snap Lock Pipe & Adjustable Elbows
ALUMINUM & GALVANIZED
Page 21



Stack Duct & Transitions
ALUMINUM & GALVANIZED
Page 22

New Products for 2023



New for 2023 is a refreshed line of plastic vents that are aesthetically appealing while offering optimal performance. This line includes redesigning existing vents and newly designed vents to meet today's installation standards.



Exhaust Wall Vent
Redesigned hood vent
Page 13



Exhaust Wall Vent
Redesigned louver vent
Page 13



Exhaust Wall Vent
Redesigned vent seal
Page 14



Exhaust or Intake
Redesigned wall vent
Page 14



Fresh Air Intake
Redesigned intake vent
Page 12



Fresh Air Intake
Redesigned intake vent
Page 14



Exhaust Soffit Vent
Redesigned soffit vent
Page 15



Exhaust Soffit Vent
New to the market
Page 15



Exhaust Roof Vent
Redesigned roof vent
Page 8

FLEXIBLE DUCTS

FOIL FLEX



Lambro offers a selection of flexible foil ducts. Installation applications are exhausting clothes dryers (UL 2158A), bath fans (UL 181 Class 1), range and other general venting needs based on local building codes.

Non UL Foil Flex Ducts

ITEM #	DIA.	LENGTH	TYPE	LAYERS	QTY
413-12	3"	25'	Bulk	4	12
4140	4"	8'	Bulk	4	12
414-12	4"	25'	Bulk	4	12
450	4"	50'	Single	4	1
416-6	6"	25'	Bulk	4	6



FEATURES:

- Maximum Operating Temperature of 250° F
- Not to be used for clothes dryer venting

UL 181 Class 1 Air Connectors

ITEM #	DIA.	LENGTH	TYPE	LAYERS	QTY
413UL-12	3"	25'	Bulk	4	12
413UL-R	3"	25'	Retail	4	12
414UL-8	4"	8'	Bulk	4	12
414UL-12	4"	25'	Bulk	4	12
414UL-R	4"	25'	Retail	4	12
450UL	4"	50'	Single	4	1
416UL-6	6"	25'	Bulk	4	6
416UL-R	6"	25'	Retail	4	6



414UL-R

FEATURES:

- UL 181 Class 1 Certified & Marked
- Maximum Operating Temperature of 250° F
- Not to be installed in lengths greater than 14 feet
- Not be used for clothes dryer venting

UL 2158A Clothes Dryer Transition Ducts

ITEM #	DIA.	LENGTH	TYPE	LAYERS	QTY
495	4"	5'	Bulk	4	12
495P-R	4"	5'	Bulk	4	12
495PTC-R*	4"	5'	Bulk	4	12
495C	4"	5'	Bulk	4	12
498	4"	8'	Bulk	4	12
498PL-R	4"	8'	Bulk	4	24
498PTC-R*	4"	8'	Bulk	4	12
498C	4"	8'	Bulk	4	12
498CTC	4"	8'	Bulk	4	12
498-20	4"	20'	Retail	4	6
498-25	4"	25'	Bulk	4	6
498-50	4"	50'	Single	4	1



498CTC

FEATURES:

- UL 2158A Certified & Marked
- Maximum Operating Temperature of 250° F
- For use with electric & gas clothes dryers



Includes two metal spring clamps

FLEXIBLE DUCTS

SEMI-RIGID



Lambro offers a selection of flexible semi-rigid ducts. Installation applications are exhausting clothes dryers (UL 2158A), bath fans, range and other general venting needs based on local building codes.

Non UL Semi-Rigid Ducts

ITEM #	DIA.	LENGTH	TYPE	QTY
301	3"	8'	Bulk	14
301-R	3"	8'	Retail	14
333	3"	25'	Bulk	10
302L	4"	8'	Bulk	9
302L-R	4"	8'	Retail	9
334	4"	25'	Bulk	6
304	5"	8'	Bulk	5
304-R	5"	8'	Retail	5
306	6"	8'	Bulk	3
306-R	6"	8'	Retail	3
336	6"	25'	Bulk	2
308	6"	8'	Bulk	5
308-R	7"	8'	Retail	5
310	8"	8'	Bulk	4
317	10"	8'	Bulk	2



FEATURES:

- Maximum Operating Temperature of 480°F Class 0
- Not be used for clothes dryer venting

302L-R

UL 2158A Clothes Dryer Transition Ducts

ITEM #	DIA.	LENGTH	TYPE	QTY
302UL	4"	8'	Bulk	15
302UL-R	4"	8'	Retail	15
3120UL*	4"	8'	Bulk	15
3120UL-R*	4"	8'	Retail	15



FEATURES:

- UL 2158A Certified & Marked
- Maximum Operating Temperature of 480°F Class 0
- For use with electric & gas clothes dryers
- Semi-rigid recommended by most leading dryer manufacturers

302UL-R



Includes two metal worm gear clamps

ROOF EXHAUST VENTS

ALUMINUM



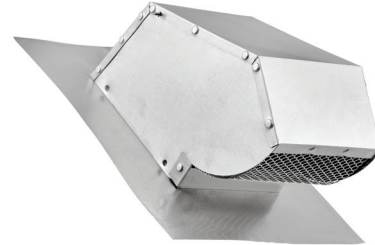
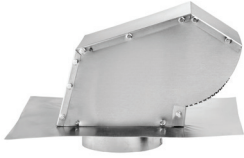
Lambro offers a selection of aluminum roof vents in multiple configurations. Installation applications are venting the exhaust fan through the roof based on local building codes.

Exhaust Vents

ITEM #	DIA.	COLLAR	DAMPER	SCREEN	TYPE	QTY
109R	4"	1 $\frac{3}{4}$ "	Yes	Yes	Single	1
109R-R	4"	1 $\frac{3}{4}$ "	Yes	Yes	Retail	1
109NC	4"	Flush	Yes	Yes	Single	1
109NS	4"	1 $\frac{3}{4}$ "	Yes	No	Single	1

FEATURES:

All aluminum construction
Damper
22 gauge

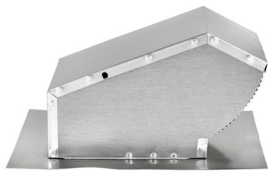


Exhaust Vents - Ducts up to 7" Round

ITEM #	DIA.	COLLAR	DAMPER	SCREEN	TYPE	QTY
116	>7"	Flush	Yes	Yes	Single	1
116-R	>7"	Flush	Yes	Yes	Retail	1
116NS	>7"	Flush	Yes	No	Single	1

FEATURES:

All aluminum construction
Damper
22 gauge

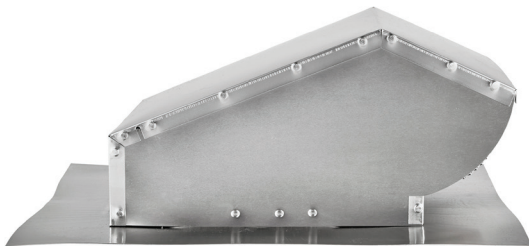


Exhaust Vents - Ducts up to 10" Round & 3 1/4" x 10"

ITEM #	DIA.	COLLAR	DAMPER	SCREEN	TYPE	QTY
107	>10"	Flush	Yes	Yes	Single	1
107NS	>10"	Flush	Yes	No	Single	1

FEATURES:

All aluminum construction
Damper
22 gauge



EXHAUST ROOF VENTS

PLASTIC



The black ABS plastic roof vents are to be installed on shingled roofs only. The vents feature an opening and closing damper that stays closed when the vent is not in use. Also featured is a screen that prevents birds from nesting inside the vent. Installation applications are exhausting clothes dryers, bath fans, range and other general venting needs based on local building codes.

4" Exhaust Roof Vent



ITEM #	DIA.	COLOR	TYPE	SCREEN	DAMPER	QTY
354R	4"	Black	Single	YES	YES	1
354R-R	4"	Black	Retail	YES	YES	1
3540	4"	Black	Bulk	YES	YES	16

FEATURES:

- Redesigned damper promotes maximum exhaust airflow with less back pressure
- Redesigned hinged screen allows for opening and closing
- Screen is removable - clothes dryer venting
- Redesigned fixed 4" collar with 1.5" length
- Opening and closing damper prevents outside elements from entering the vent
- Accessible nail installation holes

5" through 10" Exhaust Roof Vent



ITEM #	DIA.	COLOR	TYPE	SCREEN	DAMPER	QTY
355	5"	Black	Single	YES	YES	1
356	6"	Black	Single	YES	YES	1
357	7"	Black	Single	YES	YES	1
3567	NC	Black	Single	YES	YES	1
358	8"	Black	Single	YES	YES	1
359	10"	Black	Single	YES	YES	1

FEATURES:

- Roof Cap is for Shingle Roof Installations Only
- Opening and closing damper prevents outside elements from entering the vent
- Designed to prevent leaks with proper installation
- Diameters 5", 6" and 7" have removable collars

NC - No collar includes - 7" round opening - flush mount

WALL EXHAUST VENTS

ALUMINUM



Lambro offers a selection of aluminum constructed wall vents. Installation applications are exhausting clothes dryers, bath fans, range and other general venting needs based on local building codes.

Exhaust Vents - Damper (* Screen)

ITEM #	DIM.	TAIL	TYPE	QTY
106R	3.25" x 10"	5"	Single	1
106R-R	3.25" x 10"	5"	Retail	1
1060	3.25" x 10"	5"	Bulk	6
106S*	3.25" x 10"	5"	Single	1
1060S*	3.25" x 10"	5"	Bulk	6



FEATURES:

All aluminum construction
Damper - Spring controlled
22 gauge

Exhaust Vents - Damper

ITEM #	DIA.	TAIL	TYPE	QTY
343	3"	11"	Bulk	10
344	4"	11"	Bulk	10
344S	4"	11"	Retail	10



FEATURES:

All aluminum construction
Wide mouth - max airflow
Damper
26 gauge

Exhaust Vents - Damper

ITEM #	DIA.	COLLAR	TYPE	QTY
3450	5"	3"	Bulk	6
346	6"	3"	Single	1
3460	6"	3"	Bulk	6
3460-11	6"	11"	Bulk	6
347	7"	3"	Single	1
3470	7"	3"	Bulk	6
348	8"	2"	Single	1
3480	8"	2"	Bulk	6
3480-11	8"	11"	Bulk	6



FEATURES:

All aluminum construction
Damper - Spring controlled
Multiple configurations
available
22 gauge

WALL EXHAUST & INTAKE VENTS

ALUMINUM



Lambro offers a selection of aluminum constructed wall exhaust and fresh air intake vents. Installation applications are exhausting clothes dryers, bath fans, range and other general venting needs based on local building codes.

Exhaust Vents - Damper & Screen

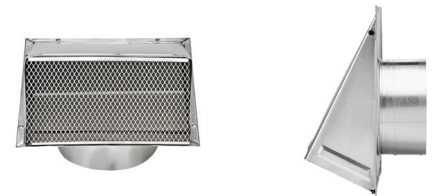
ITEM #	DIA.	COLLAR	TYPE	QTY
3440S	4"	11"	Bulk	10
346S	6"	3"	Single	1
3460S	6"	3"	Bulk	6
3460S-11	6"	11"	Bulk	6
3470S	7"	3"	Bulk	6
348S	8"	2"	Single	1
3480S	8"	2"	Bulk	6
3480S-11	8"	11"	Bulk	6

NOTE: 4" Smaller Footprint Style 



FEATURES:

All aluminum construction
Damper - Spring controlled
22 gauge



Fresh Air Intake Vents - Screen (No Damper)

ITEM #	DIA.	COLLAR	TYPE	QTY
3440NDS	4"	11"	Bulk	10
346NDS	6"	3"	Single	1
3460NDS	6"	3"	Bulk	6
348NDS	8"	2"	Single	1
3480NDS	8"	2"	Bulk	6

NOTE: 4" Smaller Footprint Style 



FEATURES:

All aluminum construction
22 gauge

Exhaust Vents - Damper (* Screen)

ITEM #	DIA.	COLLAR	TYPE	QTY
587	10"	3"	Single	1
587S *	10"	3"	Single	1
588	12"	3"	Single	1
588S *	12"	3"	Single	1

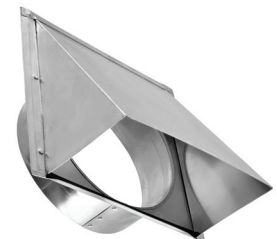


Fresh Air Intake Vents - Screen (No Damper)

ITEM #	DIA.	COLLAR	TYPE	QTY
587NDS	10"	3"	Single	1
588NDS	12"	3"	Single	1

FEATURES:

All aluminum construction
20 gauge



WALL EXHAUST & INTAKE VENTS

GALVANIZED



Lambro offers a selection of galvanized constructed wall exhaust and fresh air intake vents. Installation applications are exhausting clothes dryers, bath fans, range and other general venting needs based on local building codes.

Exhaust Vents - Damper

ITEM #	DIA.	COLLAR	TYPE	QTY
3440G	4"	11"	Bulk	6
3450G	5"	3"	Bulk	6
3460G	6"	3"	Bulk	6
3460G-11	6"	11"	Bulk	6
3470G	7"	3"	Bulk	6
3480G	8"	2"	Bulk	6
3480G-11	8"	11"	Bulk	6



FEATURES:

All galvanized construction
Damper - Spring controlled
26 gauge



Exhaust Vents - Damper & Screen

ITEM #	DIA.	COLLAR	TYPE	QTY
3440GS	4"	3"	Bulk	6
3460GS	6"	3"	Bulk	6
3460GS-11	6"	11"	Bulk	6
3470GS	7"	3"	Bulk	6
3480GS	8"	2"	Bulk	6
3480GS-11	8"	11"	Bulk	6



FEATURES:

All galvanized construction
Damper - Spring controlled
26 gauge



Fresh Air Intake Vents - Screen (No Damper)

ITEM #	DIA.	COLLAR	TYPE	QTY
3440GNDS	4"	3"	Bulk	6
3460GNDS	6"	3"	Bulk	6
3480GNDS	8"	2"	Bulk	6



FEATURES:

All galvanized construction
26 gauge

FRESH AIR INTAKE VENTS

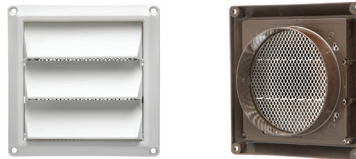
PLASTIC



The fresh air intake vents are styled with the traditional rain guard fixed louvers or the new hood style. All gas appliances should have a fresh air intake vent if they are indoors. These are gas heaters, gas fireplaces, gas water heaters, and gas dryers. Installation applications vary and should abide by local building codes.

3" - 4" Air Intake Vent - Rain Guard Style

ITEM #	DIA.	COLOR	TYPE	QTY
603W	3"	White	Bulk	8
604B	4"	Brown	Bulk	8
604W	4"	White	Bulk	8

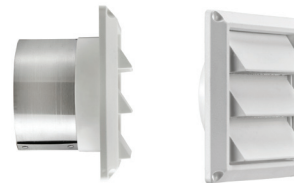


FEATURES:

- Metal screen
- Polymer resin with a UV additive

3" - 4" Air Intake Vent - Rain Guard Style

ITEM #	DIA.	PIPE	COLOR	TYPE	QTY
673W	3"	3"	White	Bulk	8
674W	4"	3"	White	Bulk	8



FEATURES:

- Metal screen
- Polymer resin with a UV additive
- 3" tail pipe

6" - 8" Air Intake Vent - Rain Guard Style

ITEM #	DIA.	COLOR	TYPE	QTY
606W	6"	White	Bulk	6
607W	7"	White	Bulk	6
608W	8"	White	Bulk	6

NOTE: 6" have 4 fixed flaps



FEATURES:

- Plastic screen
- Polymer resin with a UV additive

3" - 4" Air Intake Vent - Hood Style

ITEM #	DIA.	COLOR	TYPE	QTY
603W-16	3"	White	Bulk	16
604B-16	4"	Brown	Bulk	16
604B-R	4"	Brown	Retail	8
604W-16	4"	White	Bulk	16
604W-R	4"	White	Retail	8



FEATURES:

- Maximum airflow design
- Plastic removable screen
- Easy to clean
- Polymer resin with a UV additive

3" - 4" Air Intake Vent - Hood Style

ITEM #	DIA.	PIPE	COLOR	TYPE	QTY
673W-16	3"	3"	White	Bulk	16
673W-16	4"	3"	White	Bulk	16
604WTP	4"	11"	White	Bulk	10



FEATURES:

- Maximum airflow design
- Plastic removable screen
- Polymer resin with a UV additive

6" - 8" Air Intake Vent - Hood Style

ITEM #	DIA.	COLOR	TYPE	QTY
606W-7	6"	White	Bulk	7
607W-4	7"	White	Bulk	4
608W-4	8"	White	Bulk	4



FEATURES:

- Maximum airflow design
- Plastic hinged screen
- Polystyrene with a UV additive

WALL EXHAUST VENTS

PLASTIC HOOD

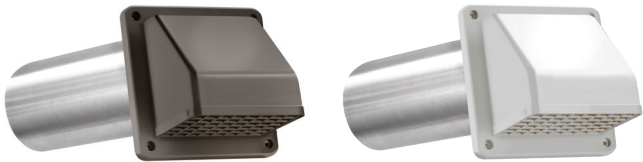


The redesigned wide mouth hood wall vent is one of the most popular exhaust vents in today's market. This vent promotes maximum airflow and includes a damper and hinged removable screen. The vent is made from a polymer resin with a UV additive offers protection from the sun. Installation applications are exhausting clothes dryers, bath fans, range and other general venting needs based on local building codes.

FEATURES:

- Redesigned wide mouth promotes maximum exhaust airflow with less back pressure
- Hinged removable screen allows for opening and closing

3" & 4" Exhaust Wall Vent - Assembled



ITEM #	DIA.	PIPE	COLOR	TYPE	PLATE	QTY
222B	3"	11"	White	Bulk	Yes	10
222W	3"	11"	White	Bulk	Yes	10
222WS	3"	11"	White	Retail	No	10
224B	4"	11"	Brown	Bulk	Yes	10
224B-B	4"	11"	Brown	Bulk	No	10
224BS	4"	11"	Brown	Retail	No	10
224W	4"	11"	White	Bulk	Yes	10
224W-B	4"	11"	White	Bulk	No	10
224WS	4"	11"	White	Retail	No	10

3" & 4" Exhaust Wall Vent - Unassembled



ITEM #	DIA.	PIPE	COLOR	TYPE	PLATE	QTY
222WKD	3"	11"	White	Bulk	Yes	18
224BKD	4"	11"	Brown	Bulk	Yes	18
224WKD	4"	11"	White	Bulk	Yes	18

3" & 4" Exhaust Wall Vent



ITEM #	DIA.	COLOR	TYPE	QTY
1470B	3"	Brown	Bulk	12
1470W	3"	White	Bulk	12
1471B	4"	Brown	Bulk	12
1471B-R	4"	Brown	Retail	6
1471W	4"	White	Bulk	12
1471W-R	4"	White	Retail	6

6" - 8" Exhaust or Intake Wall Vent

Made from HIPS (High Impact Polystyrene)
Removable damper - convert to air intake
Spring loaded damper
1.5" length collar



ITEM #	DIA.	COLOR	TYPE	QTY
351GR	6"	Gray	Single	1
351GR-R	6"	Gray	Retail	6
3510G	6"	Gray	Bulk	18
351W	6"	White	Single	1
351W-R	6"	White	Retail	6
3510W	6"	White	Bulk	18
352W	7"	White	Single	1
389G	8"	Gray	Single	1
389W	8"	White	Single	1

WALL EXHAUST VENTS

PLASTIC LOUVER



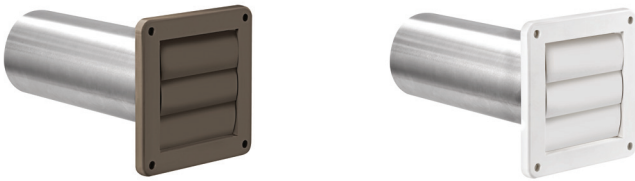
The redesigned louvered wall vent is one of the most popular exhaust vents in today's market. The vent is made from a polymer resin with a UV additive offers protection from the sun. Installation applications are exhausting clothes dryers, bath fans, range and other general venting needs based on local building codes.

FEATURES:

Redesigned louvered vent promotes maximum exhaust airflow

Opening and closing flaps prevent outside elements from entering the vent

3" & 4" Exhaust Wall Vent - Assembled

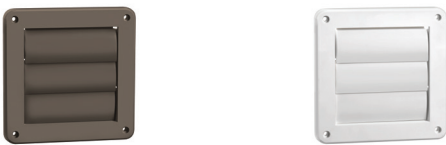


ITEM #	DIA.	PIPE	COLOR	TYPE	PLATE	QTY
290W	3"	1 1/2"	White	Bulk	Yes	12
267B	4"	1 1/2"	Brown	Bulk	Yes	12
267B-B	4"	1 1/2"	Brown	Bulk	No	12
267BS	4"	1 1/2"	Brown	Retail	No	12
267W	4"	1 1/2"	White	Bulk	Yes	12
267W-B	4"	1 1/2"	White	Bulk	No	12
267WS	4"	1 1/2"	White	Retail	No	12

3" & 4" Exhaust Wall Vent - Unassembled

ITEM #	DIA.	PIPE	COLOR	TYPE	PLATE	QTY
267BKD	4"	1 1/2"	Brown	Bulk	Yes	18
267WKD	4"	1 1/2"	White	Bulk	Yes	18

3" & 4" Exhaust Wall Vent



ITEM #	DIA.	COLOR	TYPE	QTY
1475W	3"	White	Bulk	12
1423B	4"	Brown	Bulk	12
2677B-R	4"	Brown	Retail	12
1423W	4"	White	Bulk	12
2676W-R	4"	White	Retail	12

6" - 8" Exhaust Wall Vent

1.5" length collar



ITEM #	DIA.	COLOR	TYPE	QTY
361B	6"	Brown	Bulk	12
361W	6"	White	Bulk	12
362W	7"	White	Bulk	12
363W	8"	White	Bulk	12

3" & 4" Exhaust Wall Vent - Assembled



ITEM #	DIA.	PIPE	COLOR	TYPE	PLATE	QTY
1422WTP	4"	1 1/2"	White	Bulk	No	12
1422WTP-R	4"	1 1/2"	White	Retail	No	12

3" & 4" Exhaust Wall Vent



ITEM #	DIA.	COLOR	TYPE	QTY
1422W	4"	White	Bulk	12
1422W-R	4"	White	Retail	12

PLATE - Installs on interior wall to cover the cut hole for pipe.

SOFFIT EXHAUST VENTS

PLASTIC



The soffit vents are styled with the traditional rain guard fixed louvers or the new hood style. Installation applications vary and should abide by local building codes.

3" - 4" Soffit Vent

ITEM #	DIA.	COLOR	TYPE	QTY
153W	3"	White	Bulk	12
143B	4"	Brown	Bulk	12
143W	4"	White	Bulk	12
143WP	4"	White	Retail	6



FEATURES:

- Maximum airflow design
- Opening/closing damper
- Polymer resin with a UV additive

4" Soffit Vent

ITEM #	DIA.	PIPE	COLOR	TYPE	QTY
143WTP	4"	3"	White	Bulk	12
143WTP-R	4"	3"	White	Retail	4



FEATURES:

- Maximum airflow design
- Opening/closing damper
- Polymer resin with a UV additive

4" Recessed Soffit Vent

ITEM #	DIA.	COLOR	TYPE	QTY
144W	4"	White	Bulk	12
144W-R	4"	White	Bulk	6



FEATURES:

- Recessed design
- Maximum airflow
- Opening/closing damper
- Removable hinged screen
- Polymer resin with a UV additive

WALL EXHAUST VENTS

PLASTIC

4" Exhaust Wall Vent - Floating Damper

ITEM #	DIA.	COLOR	TYPE	QTY
289W	4"	White	Bulk	1
289W-R	4"	White	Bulk	5
289W-6	4"	White	Bulk	6



FEATURES:

- Replaces traditional clothes dryer or bath fan wall vents
- Floating damper prevents outside elements from entering the vent
- HIPS (high impact polystyrene) with a UV additive

VENT KITS - FOIL FLEX

BATH FAN



Lambro offers a selection of flexible foil duct kits (UL 181 Class 1 Air Connectors). Installation applications are exhausting bath fans and other general venting needs based on local building codes.

Louvered Through the Wall Vent Kit

ITEM #	DIA.	LENGTH	TYPE	QTY
480UL	4"	8'	Retail	10



FEATURES:

UL 181 class 1 certified & marked duct
Louvers keep out outside elements from entering the vent when not in use
Air connector duct maximum operating temperature is 250°F
Do not be used for clothes dryer venting

Single Flap Through the Wall Vent Kit

ITEM #	DIA.	LENGTH	TYPE	QTY
481UL	4"	8'	Single	1



FEATURES:

UL 181 class 1 certified & marked duct
Louvers keep out outside elements
Air connector duct maximum operating temperature is 250°F
Do not be used for clothes dryer venting

Recessed Through the Soffit Vent Kit

ITEM #	DIA.	LENGTH	TYPE	QTY
144W-K	4"	8'	Retail	6



FEATURES:

UL 181 class 1 certified & marked duct
Hinged screen prevents birds from nesting
Flush mount maximum airflow vent
Air connector duct maximum operating temperature is 250°F
Do not be used for clothes dryer venting

Low Profile Through the Roof Vent Kit

ITEM #	DIA.	LENGTH	TYPE	QTY
402UL	4"	8'	Retail	1



FEATURES:

UL 181 class 1 certified & marked duct
Hinged screen prevents birds from nesting
Damper prevent back drafts when not in use
Air connector duct maximum operating temperature is 250°F
Do not be used for clothes dryer venting

VENT KITS - SEMI-RIGID

CLOTHES DRYER



Lambro offers a selection of flexible semi-rigid duct kits (UL 2158A Clothes Dryer Transition Ducts). Installation applications are exhausting clothes dryer exhausts based on local building codes.

Louvered Through the Wall Vent Kit

ITEM #	DIA.	LENGTH	COLOR	TYPE	QTY
1379W-R	4"	8'	White	Retail	5



FEATURES:

- UL 2158A certified & marked duct
- Louvers keep out outside elements from entering the vent when not in use
- Semi-rigid duct maximum operating temperature is 480°F



Hood Through the Wall Vent Kit

ITEM #	DIA.	LENGTH	COLOR	TYPE	QTY
1375W-R	4"	8'	White	Retail	5



FEATURES:

- UL 2158A certified & marked duct
- Hinged screen prevents birds from nesting
- Maximum airflow vent
- Semi-rigid duct maximum operating temperature is 480°F



Dryer Exhaust to the Wall Quick Connect Kit

ITEM #	DIA.	LENGTH	TYPE	QTY
4004UL	4"	8'	Retail	1



FEATURES:

- UL 2158A certified & marked duct
- Elbows made of ABS plastic
- Elbow A rubber gasket secures elbow to dryer exhaust outlet - no clamp
- Elbow B rubber gasket secures elbow to wall plate outlet - no clamp
- Semi-rigid duct maximum operating temperature is 480°F
- Kit is preassembled - elbows are attached to duct

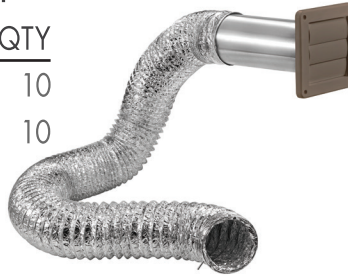
VENT KITS - FOIL FLEX CLOTHES DRYER



Lambro offers a selection of flexible foil duct kits (UL 2158A Clothes Dryer Transition Ducts). Installation applications are exhausting clothes dryer exhausts based on local building codes.

Louvered Through the Wall Vent Kit

ITEM #	DIA.	LENGTH	COLOR	TYPE	QTY
1377B	4"	5'	Brown	Retail	10
1379B	4"	8'	Brown	Retail	10



ITEM #	DIA.	LENGTH	COLOR	TYPE	QTY
1377W	4"	5'	White	Retail	10
1379W	4"	8'	White	Retail	10



FEATURES:

UL 2158A certified & marked duct
Louvers keep out outside elements from entering the vent when not in use
Foil flex duct has a maximum operating temperature of 250°F



1379B



1379W

Hood Through the Wall Vent Kit

ITEM #	DIA.	LENGTH	COLOR	TYPE	QTY
1373B	4"	5'	Brown	Retail	10
1375B	4"	8'	Brown	Retail	10



ITEM #	DIA.	LENGTH	COLOR	TYPE	QTY
1373W	4"	5'	White	Retail	10
1375W	4"	8'	White	Retail	10



FEATURES:

UL 2158A certified & marked duct
Hinged screen prevents birds from nesting
Flush mount maximum airflow vent
Foil flex duct has a maximum operating temperature of 250°F



1375B



1375W

Indoor Vent Kit (Electric Dryers Only)

ITEM #	DIA.	LENGTH	COLOR	TYPE	QTY
211UL	4"	5'	White	Retail	12
211ULC	4"	5'	White	Retail	12



211ULC



FEATURES:

Do NOT use for gas clothes dryers
UL 2158A certified & marked duct
Foil flex duct has a maximum operating temperature of 250°F

ACCESSORIES

BATH FAN & CLOTHES DRYERS



Lambro offers a selection of accessories for bath fan and clothes dryer exhaust venting applications. Installation applications vary and should abide by local building codes.

Tite-Fit Clothes Dryer Duct (90°)

ITEM #	DIA.	LENGTH	TYPE	QTY
3005	4"	18" - 30"	Retail	4
3006	4"	24" - 41"	Retail	4



FEATURES:

- All aluminum construction
- 90 degree connections
- 26 gauge

Tite-Fit Clothes Dryer Duct (90° to Straight)

ITEM #	DIA.	LENGTH	TYPE	QTY
3008	4"	24" - 41"	Retail	4



FEATURES:

- All aluminum construction
- 90 degree to straight connection
- 26 gauge

Quick Fit Clothes Dryer Exhaust Elbow

ITEM #	DIA.	COLOR	TYPE	QTY
3003L	4"	White	Retail	6



FEATURES:

- Rubber gasket - secure connection to dryer
- Clamp required for foil duct
- ABS plastic elbow

In-Line Duct Draft Blocker

ITEM #	DIA.	COLOR	TYPE	QTY
1775L	4"	White	Retail	10



FEATURES:

- Prevents outside air from entering home
- Requires duct clamps
- Polymer resin

Wall Vent Guard

ITEM #	USAGE	TYPE	QTY
1491WG	3" - 4"	Bulk	12



FEATURES:

- Hinged guard prevents birds from nesting
- Polymer resin with a UV additive
- Fits vent bases 6.75" x 6.75"
- Max vent depth 4.5"

ACCESSORIES

CLAMPS, CONNECTORS, ETC.



Lambro offers a wide selection of duct connectors, duct clamps and washing machine drip pans. Installation applications vary and should abide by local building codes.

Plastic Adaptor

ITEM #	DIA.	TYPE	QTY
235	3" - 4"	Bulk	12



FEATURES:

Increase bathroom fan exhaust venting diameter from 3" to 4"

Duct Connectors

ITEM #	DIA.	Material	TYPE	QTY
243	3"	Galvanized	Bulk	6
244-36	4"	Aluminum	Bulk	36
244G-36	4"	Galvanized	Bulk	36
246	6"	Galvanized	Bulk	6
248	8"	Galvanized	Bulk	6



FEATURES:

Joins together two lengths of flexible duct

Worm Gear Clamps

ITEM #	DIA.	RANGE	TYPE	QTY
283	3"	2.5" - 3.5"	Bulk	50
284L	4"	3.5" - 4.5"	Bulk	50
2841	4"	3.5" - 4.5"	Retail	24
2840	5"	4.5" - 5.5"	Bulk	500
381	6"	5.5" - 6.5"	Bulk	12
382	7" / 8"	6.5" - 8.5"	Bulk	12



FEATURES:

Used to fasten ventilation duct
Adjustable using a hex or flat head screwdriver

Spring Clamps

ITEM #	DIA.	MATERIAL	TYPE	QTY
254	4"	Galvanized	Bulk	50
2541L	4"	Galvanized	Retail	50
2540	4"	Galvanized	Bulk	500



FEATURES:

For use with flexible foil duct only

Washing Machine Drip Pan

ITEM #	DIM.	DEPTH	TYPE	QTY
1780	29" x 31"	1.5"	Bulk	6
1781	31" x 36"	2.5"	Bulk	4



FEATURES:

Protects your floor from water leakage
High impact polypropylene plastic for strength
Includes drain fitting

SNAP LOCK PIPE & ADJUSTABLE ELBOWS

ALUMINUM & GALVANIZED



Lambro offers a selection of snap lock pipes and adjustable elbows in aluminum and galvanized materials in various gauges. Installation applications are exhausting clothes dryers, bath fans, range and other general venting needs based on local building codes.

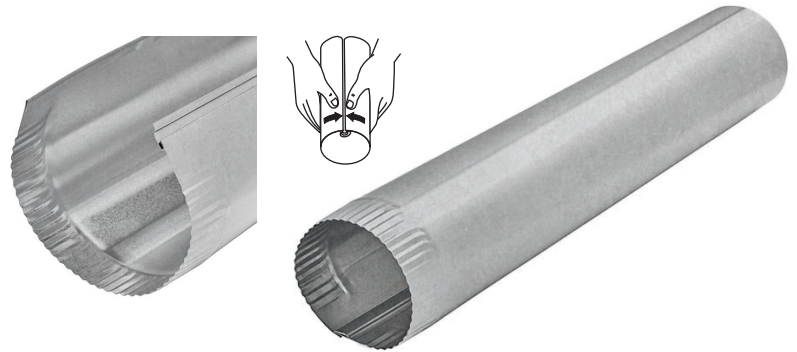
Aluminum Snap Lock Pipes

ITEM #	DIA.	LENGTH	TYPE	GAUGE	QTY
228	3"	2'	Bulk	30	25
229	4"	2'	Bulk	30	25
229-016	4"	2'	Bulk	26	25
423	6"	2'	Bulk	26	25
425	8"	2'	Bulk	26	10
427	4"	5'	Bulk	28	10
429	6"	5'	Bulk	26	10



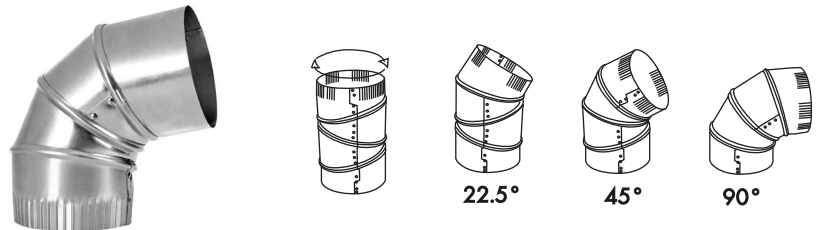
Galvanized Snap Lock Pipes

ITEM #	DIA.	LENGTH	TYPE	GAUGE	QTY
701	3"	2'	Bulk	30	25
702	4"	2'	Bulk	30	25
704	6"	2'	Bulk	30	10
706	8"	2'	Bulk	30	10
747	4"	5'	Bulk	30	10
749	6"	5'	Bulk	30	10



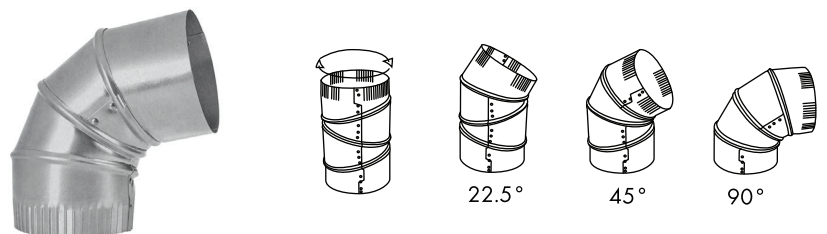
Aluminum Adjustable Elbows

ITEM #	DIA.	TYPE	GAUGE	QTY
2300	3"	Bulk	26	12
2310	4"	Bulk	26	12
433	6"	Bulk	26	12



Galvanized Adjustable Elbows

ITEM #	DIA.	TYPE	GAUGE	QTY
721	3"	Bulk	28	12
722	4"	Bulk	28	12
737	4"	Bulk	26	12
724	6"	Bulk	28	12
726	8"	Bulk	28	6



STACK DUCT & TRANSITIONS

ALUMINUM & GALVANIZED



Lambro offers a selection of stack duct and transitions in aluminum and galvanized materials in various gauges. Installation applications are exhausting range and other general HVAC venting needs based on local building codes.

Aluminum 3 1/4 " x 10" Wall Stack Duct

ITEM #	LENGTH	TYPE	GAUGE	QTY
101L	2'	Bulk	26	5



FEATURES:

- Low profile duct
- 2" x 4" and 2" x 6" walls
- Snap lock seam
- Boot clips

Galvanized 3 1/4 " x 10" Wall Stack Duct

ITEM #	LENGTH	TYPE	GAUGE	QTY
126L	2'	Bulk	30	5



Aluminum 3 1/4 " x 10" - 90 Degree Short Way Elbow

ITEM #	TYPE	GAUGE	QTY
102	Bulk	22	4



FEATURES:

- For use with stack duct
- 90° turns
- Boot clips

Galvanized 3 1/4 " x 10" - 90 Degree Short Way Elbow

ITEM #	TYPE	GAUGE	QTY
1020L	Bulk	30	4



Aluminum 3 1/4 " x 10" to Round Transitions

ITEM #	DIA.	TYPE	GAUGE	QTY
122	6"	Bulk	26	6



FEATURES:

- For use with stack duct
- Rectangular to round
- Boot clips

Galvanized 3 1/4 " x 10" to Round Transitions

ITEM #	DIA.	TYPE	GAUGE	QTY
137	6"	Bulk	30	6
138	7"	Bulk	30	6



Galvanized 3 1/4 " x 10" to Round Transitions - Offset

ITEM #	DIA.	TYPE	GAUGE	QTY
133MFG	6"	Bulk	30	6
133MFG	7"	Bulk	30	6



FEATURES:

- For use with stack duct
- Rectangular to round
- Boot clips



HEADQUARTERS
AMITYVILLE, NY

(631) 842-8088
SALES@LAMBRO.NET
WWW.LAMBRO.NET